



# GAT MONTHLY MEMBERSHIP PROGRESS REPORT

Results as of: 4/30/2024

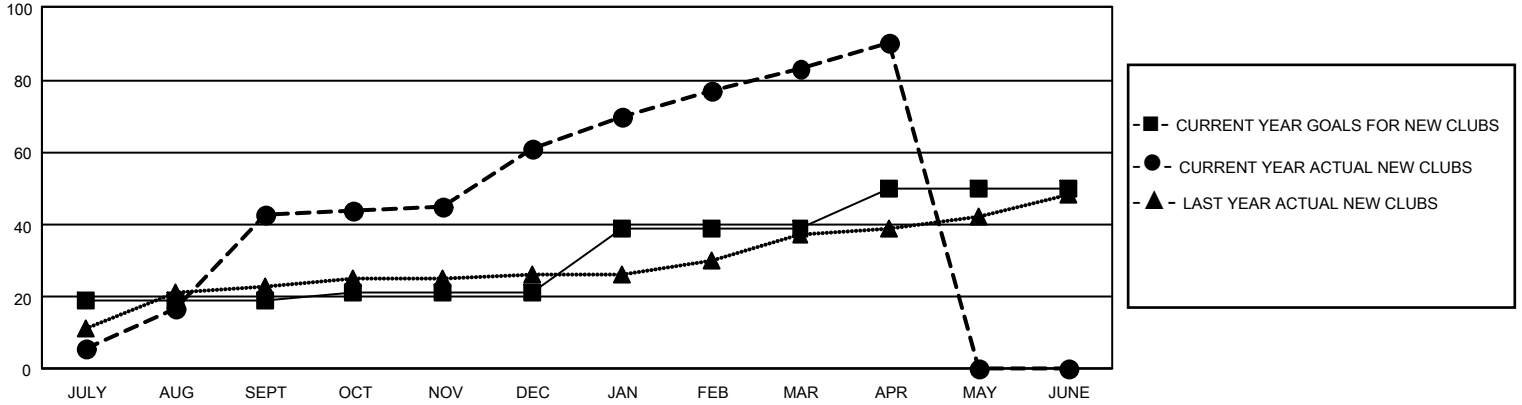
## GMT Constitutional Area 6 - I, Group I

REPORT DOES NOT INCLUDE CLUBS IN UNDISTRICTED AREAS.

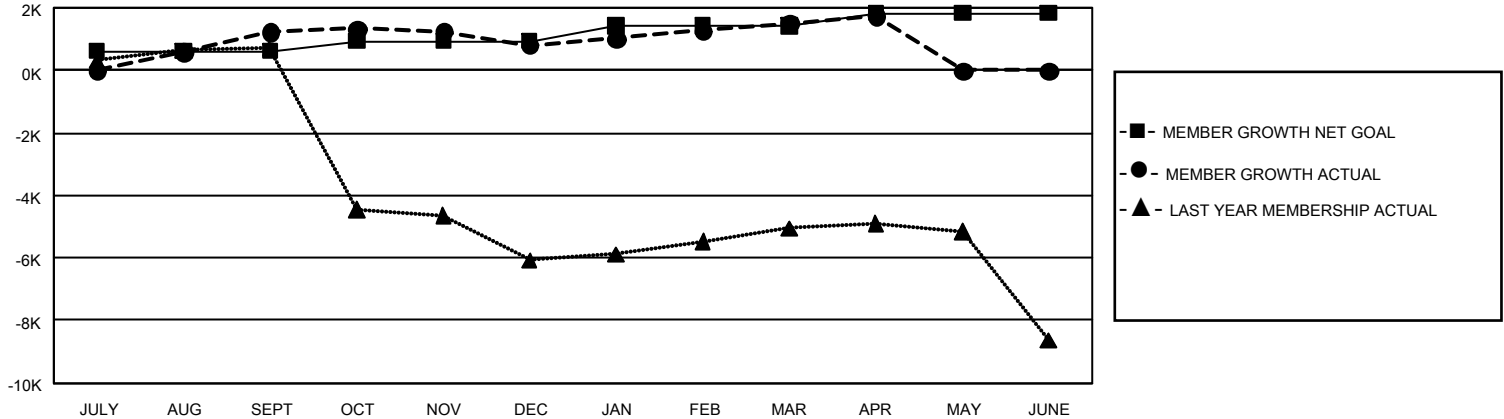
Clubs			
RESULTS FOR 2023-2024			
QUARTER	NEW CLUB GOAL	NEW CLUBS	DROPPED CLUBS
JULY/AUG/SEPT	57	43	14
OCT/NOV/DEC	6	18	37
JAN/FEB/MAR	54	22	12
APR/MAY/JUNE	33	7	2

Members			
RESULTS FOR 2023-2024			
QUARTER	MEMBER GROWTH NET GOAL	MEMBER GROWTH ACTUAL	DROPPED MEMBERS ACTUAL (including transfers)
JULY/AUG/SEPT	610	3,059	1,444
OCT/NOV/DEC	325	1,237	1,562
JAN/FEB/MAR	500	1,304	483
APR/MAY/JUNE	405	531	228

GOALS AND ACTUAL NEW CLUBS CUMULATIVE



GOALS AND ACTUAL MEMBERS CUMULATIVE



<b>DROPPED CLUBS: 65</b>	704 CLUBS OF 1,292 ADDED 1 OR MORE NEW MEMBERS	<b>GENDER DISTRIBUTION</b>	
		MALE 25,336 (66.58%) FEMALE 12,709 (33.40%) NON BINARY 2 (0.01%) PREFER NOT TO ANSWER 6 (0.02%)	
<b>DROPPED MEMBERS</b>		<a href="#">CLICK HERE FOR CUMULATIVE MEMBERSHIP DATA</a>	TOTAL FAMILY UNIT MEMBERS 14,335
DECEASED 75 CLUB CANCELLED 825 OTHER 2,814 <b>TOTAL 3,714</b>	FAMILY MEMBERS PAYING HALF DUES 8,145		